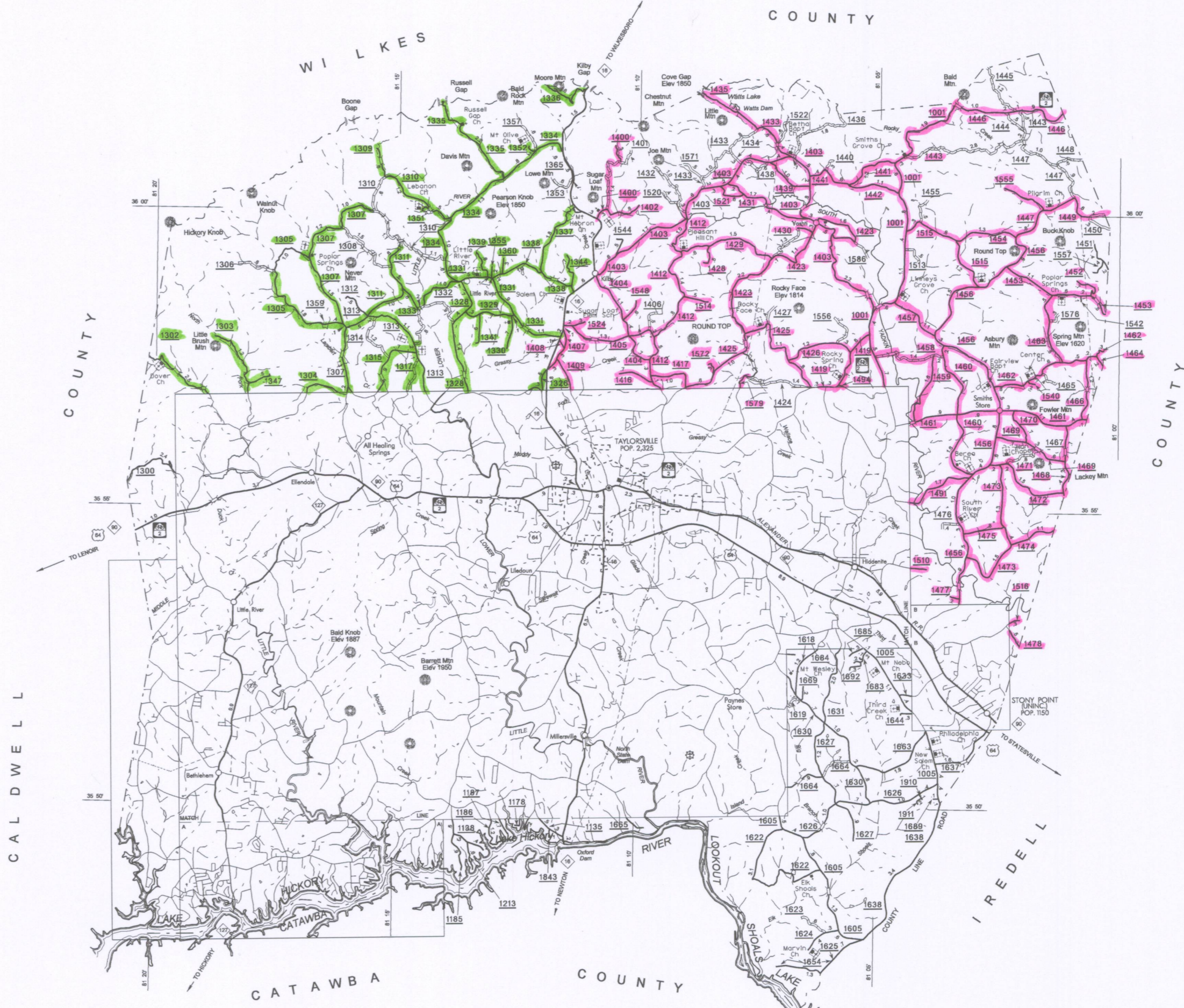
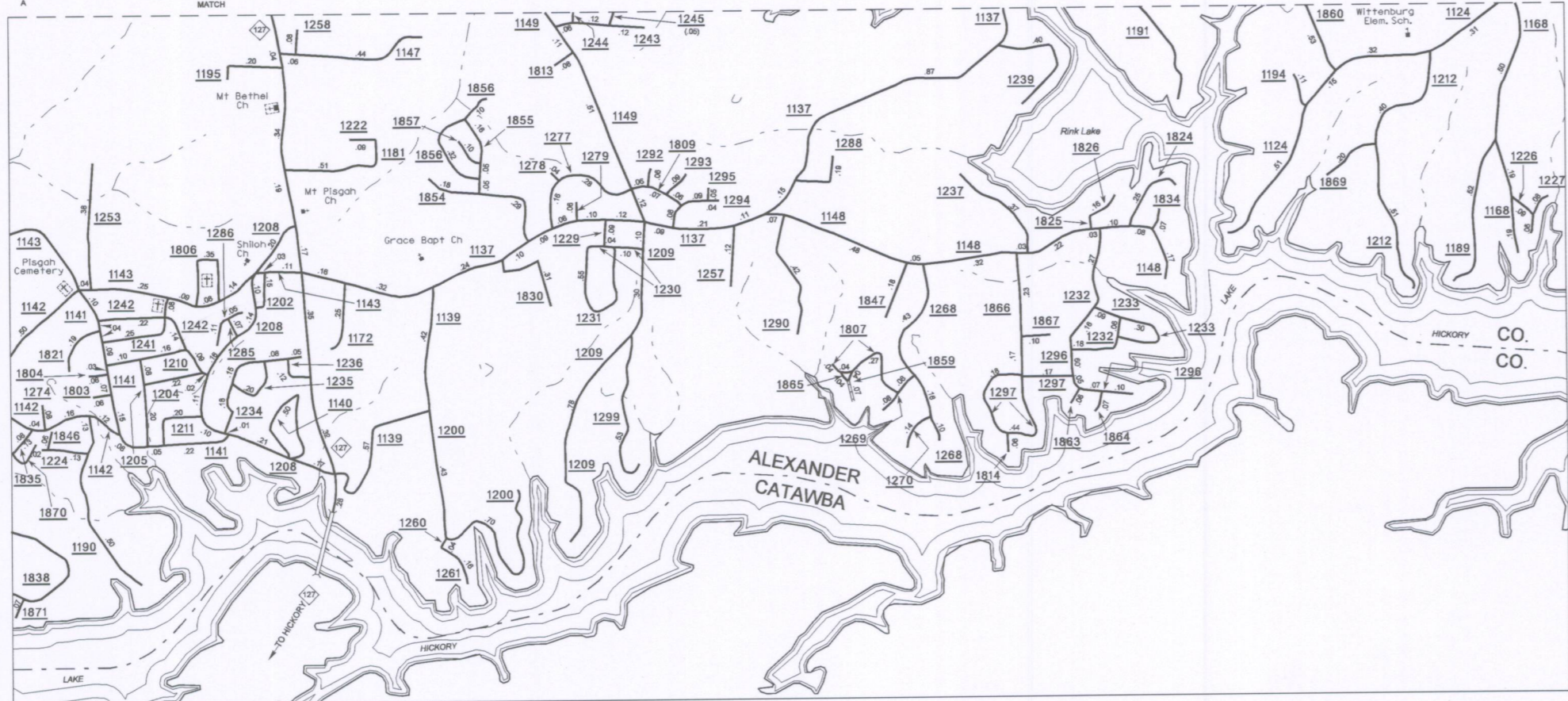
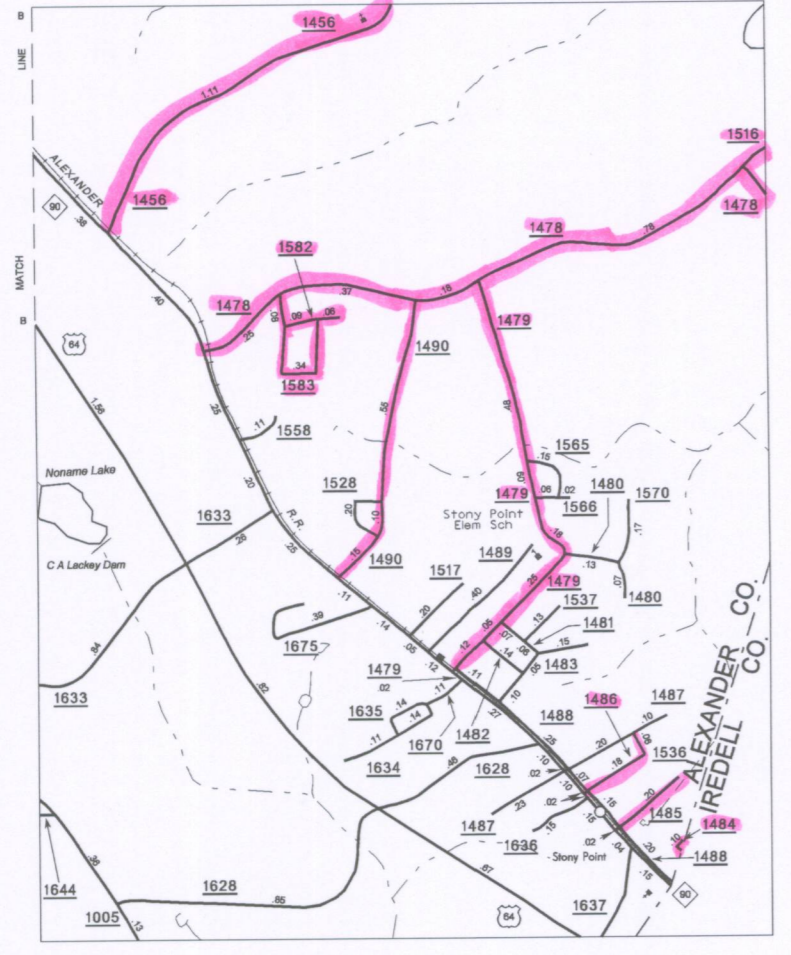
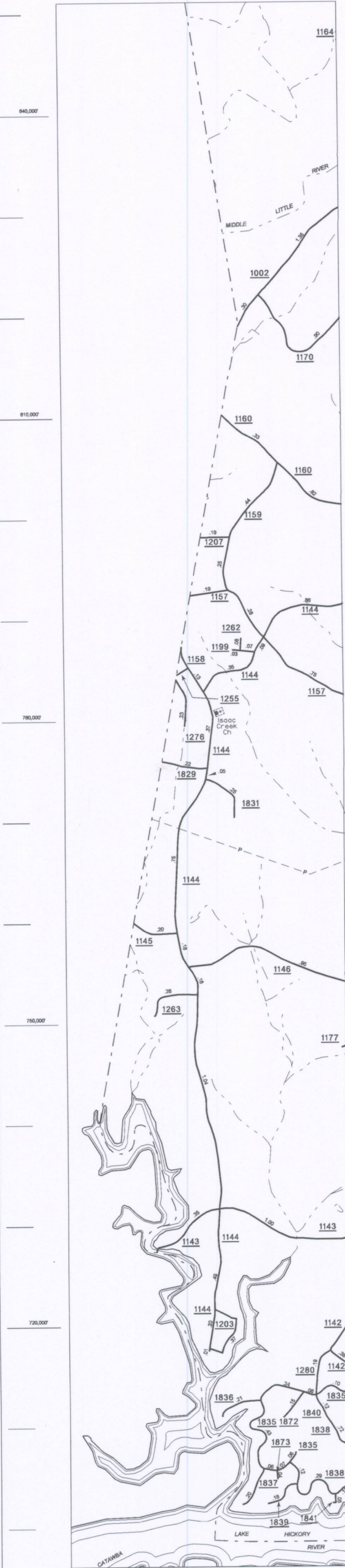
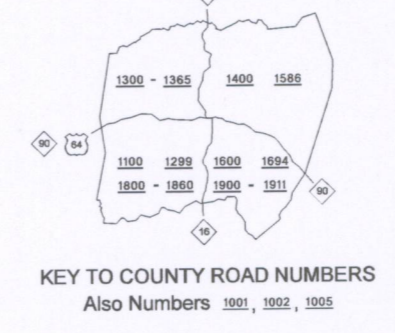


**NORTH WEST SECTION**  
**NORTH EAST SECTION**



- LEGEND**
- PRIMITIVE OR UNIMPROVED ROAD
- GRADED AND DRAINED ROAD
- SOIL GRAVEL OR STONE SURFACED ROAD
- HARD SURFACED ROAD
- 4 LANE UNDIVIDED HIGHWAY
- DIVIDED HIGHWAY
- HIGHWAY WITH FRONTAGE ROADS
- FULL CONTROL ACCESS
- NON-SYSTEM ROAD
- PROJECTED LOCATION
- INTERSECTION DISTANCE
- TRAFFIC CIRCLE
- HIGHWAY INTERCHANGE
- DETAILED HIGHWAY INTERCHANGE
- ROAD THROUGH MOUNTAIN PASS
- HIGHWAY BRIDGE
- UNDERPASS
- OVERPASS
- DRAW SPAN ON BRIDGE
- HIGHWAY TUNNEL
- FORD
- INTERSTATE HIGHWAY
- U.S. NUMBERED HIGHWAY
- N.C. NUMBERED HIGHWAY
- U.S. NUMBERED BICYCLE ROUTE
- N.C. NUMBERED BICYCLE ROUTE
- INTERSTATE INTERCHANGE NUMBER
- SECONDARY ROAD NUMBER
- CABLE
- RAILROAD, ANY NUMBER OF TRACKS USED BY SINGLE OPERATING COMPANY
- RAILROAD, ANY NUMBER OF TRACKS USED BY MORE THAN ONE OPERATION
- COMPANY ON SAME OR ADJACENT RIGHTS-OF-WAY
- RAILROAD STATION
- RAILROAD CROSSING
- UNDERPASS
- OVERPASS
- RAILROAD TUNNEL
- INSET AREA
- BOUNDARY LINE
- URBAN EXTENSION
- RESERVATION OR PARK BOUNDARY
- CITY LIMIT
- NATIONAL FOREST BOUNDARY
- STATE FOREST BOUNDARY
- FEDERAL GAMELAND BOUNDARY
- STATE GAMELAND BOUNDARY
- MILITARY RESERVATION BOUNDARY
- COUNTY LINE
- STATE LINE
- INCORPORATED CITY OR VILLAGE (GENERALIZED)
- FREE OR TOLL FERRY
- CANAL
- NARROW STREAM
- WIDE STREAM
- DAM WITH LOCK
- DAM
- RESERVOIR, POND, OR LAKE
- COMMUNITY AND TOWN CENTER
- COUNTY SEAT
- SCHOOL
- COLLEGE OR UNIVERSITY
- HOSPITAL
- CHURCH
- CHURCH WITH CEMETERY
- CEMETERY
- PATROL STATION
- CORRECTIONAL OR PENAL INSTN.
- HIGHWAY GARAGE OR MAINT. YARD
- HIGHWAY DIV. OR DIST. OFFICE
- WEIGHT STATION
- MONUMENT-SMALL HISTORICAL SITE
- LIGHTHOUSE
- MOUNTAIN PEAK
- REST AREA
- TRIANGULATION STATION
- COAST GUARD STATION
- MILITARY AIRFIELD
- COMMERCIAL OR MUNICIPAL FIELD
- HANGAR ON FIELD
- LANDING STRIP
- MARKED AUXILIARY FIELD



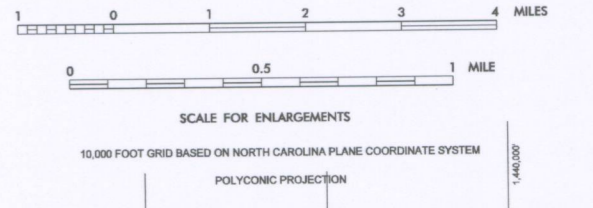
ENLARGED MUNICIPAL AND SUBURBAN AREAS

# ALEXANDER COUNTY

NORTH CAROLINA

PREPARED BY THE  
NORTH CAROLINA DEPARTMENT OF TRANSPORTATION  
STATE ROAD MAINTENANCE UNIT - MAPPING AND INFORMATION SECTION

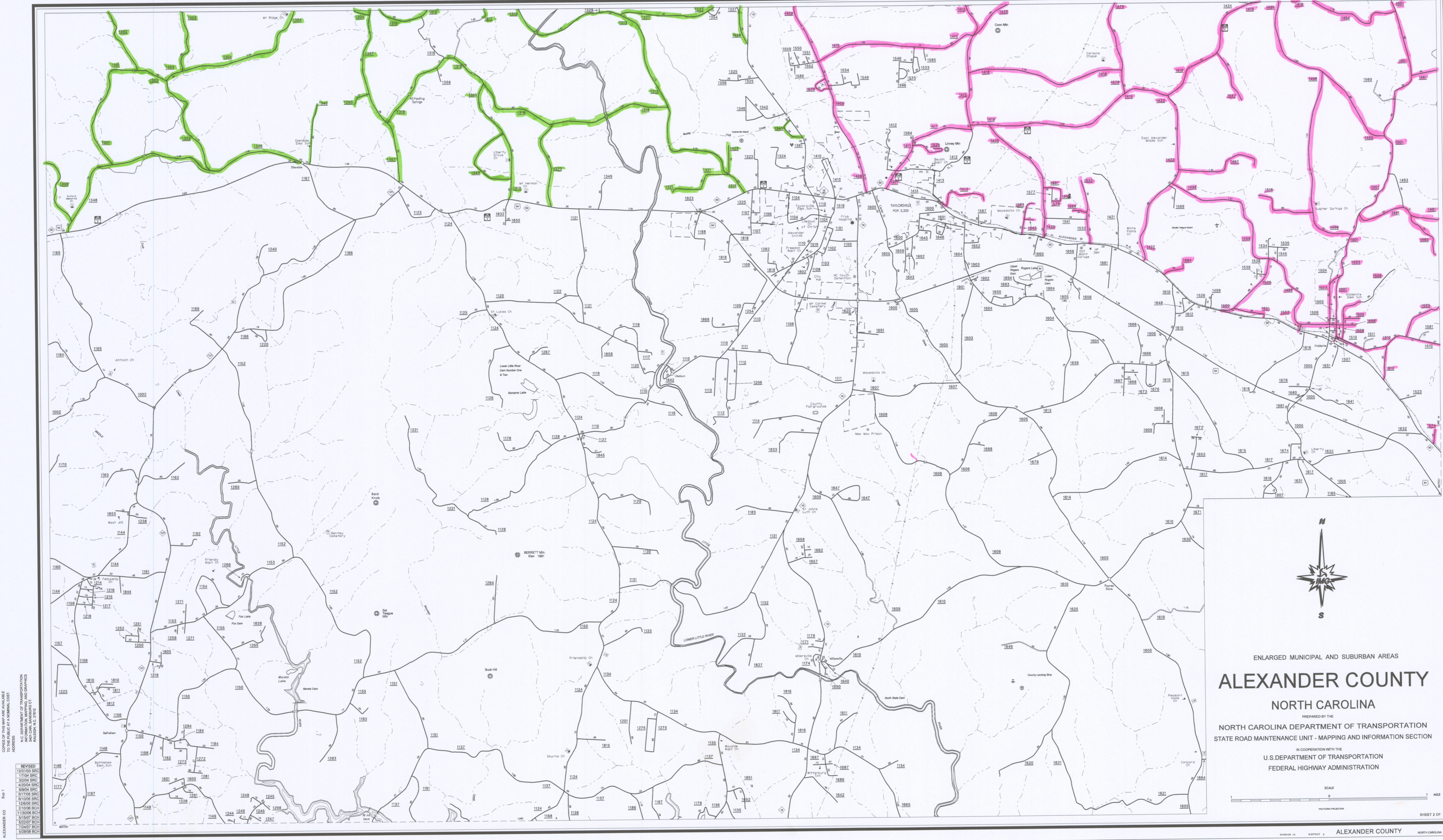
IN COOPERATION WITH THE  
U.S. DEPARTMENT OF TRANSPORTATION  
FEDERAL HIGHWAY ADMINISTRATION



County Boundary alignments are based on information provided by State and Federal agencies, and are shown in their approximate locations.

NOTE: MAP INCLUDES ONLY STATE MAINTAINED ROADS OR IMPORTANT NON-SYSTEM ROADS. ROADS SHOWN AS OF OCT 8, 2009

REVISED  
1143 SRC  
1704 SRC  
205 SRC  
1006 SRC  
894 SRC  
1705 SRC  
1005 SRC  
0905 SRC  
1006 BCH  
3006 BCH  
1507 BCH  
2207 BCH  
2407 BCH  
2808 BCH



COPIES OF THIS MAP ARE AVAILABLE AT THE FOLLOWING OFFICES:  
 ALEXANDER COUNTY  
 12/31/03 SRC  
 1/7/04 SRC  
 3/20/04 SRC  
 4/20/04 SRC  
 6/9/04 SRC  
 8/17/05 SRC  
 12/8/05 SRC  
 2/10/06 BCH  
 5/14/07 BCH  
 8/22/07 BCH  
 7/24/07 BCH  
 5/20/08 BCH



ENLARGED MUNICIPAL AND SUBURBAN AREAS  
**ALEXANDER COUNTY**  
 NORTH CAROLINA  
 PREPARED BY THE  
 NORTH CAROLINA DEPARTMENT OF TRANSPORTATION  
 STATE ROAD MAINTENANCE UNIT - MAPPING AND INFORMATION SECTION  
 IN COOPERATION WITH THE  
 U.S. DEPARTMENT OF TRANSPORTATION  
 FEDERAL HIGHWAY ADMINISTRATION

